

# THE INTERSECTION BETWEEN CIRCULARITY AND CHEMISTRY

---

GC3 Roundtable 2019

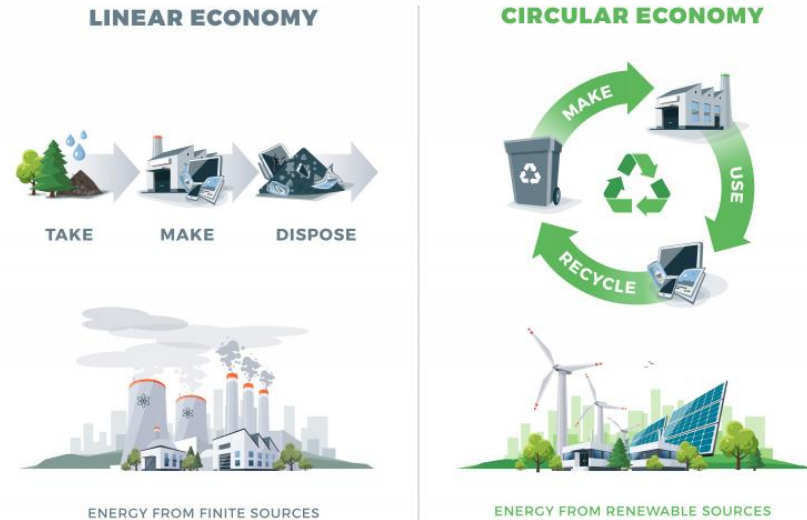
Cincinnati OH

# What is the Circular Economy?

A circular economy is an industrial system that is restorative or regenerative by intention and design.

It replaces the end-of-life concept with restoration, shifts towards the use of renewable energy and eliminates the use of toxic chemicals, which impair reuse and return to the biosphere

A circular economy aims for the elimination of waste through the superior design of materials, products, systems and business models.



It is based on 3 principles

- Design out waste and pollution
- Keep products and materials in use
- Regenerate natural systems

# Material Selection

Material choices play a fundamental role in a circular economy. Safe and circular materials are safer to humans and the environment, which means they can be reused without causing contamination.

**Transparency** of chemical composition of materials is complex, but critical and requires more than just reviewing SDS. Screening systems are common

**Feedstock's** should be selected from recycled, reused or properly managed renewable resources.

**Circular Design** considerations

- Will the material be combined with other materials and can it be separated?
- What is the expected lifetime of the product containing the material? Will it be repaired?
- How can the value of the material be recovered after the use phase of the product?

**After Use Phase**

- What is needed to recover the material if it is “technical”?
- Is the material designed so that it can biodegrade safely?

# Our Panel

- Serena Pozza: Manager Healthy Materials and Strategy at DSM-Niaga
- Tammy Ayers: Manager Global Sustainable Design and Development at Steelcase
- Druvh Raina: Director Sustainability at Tarkett

They will share

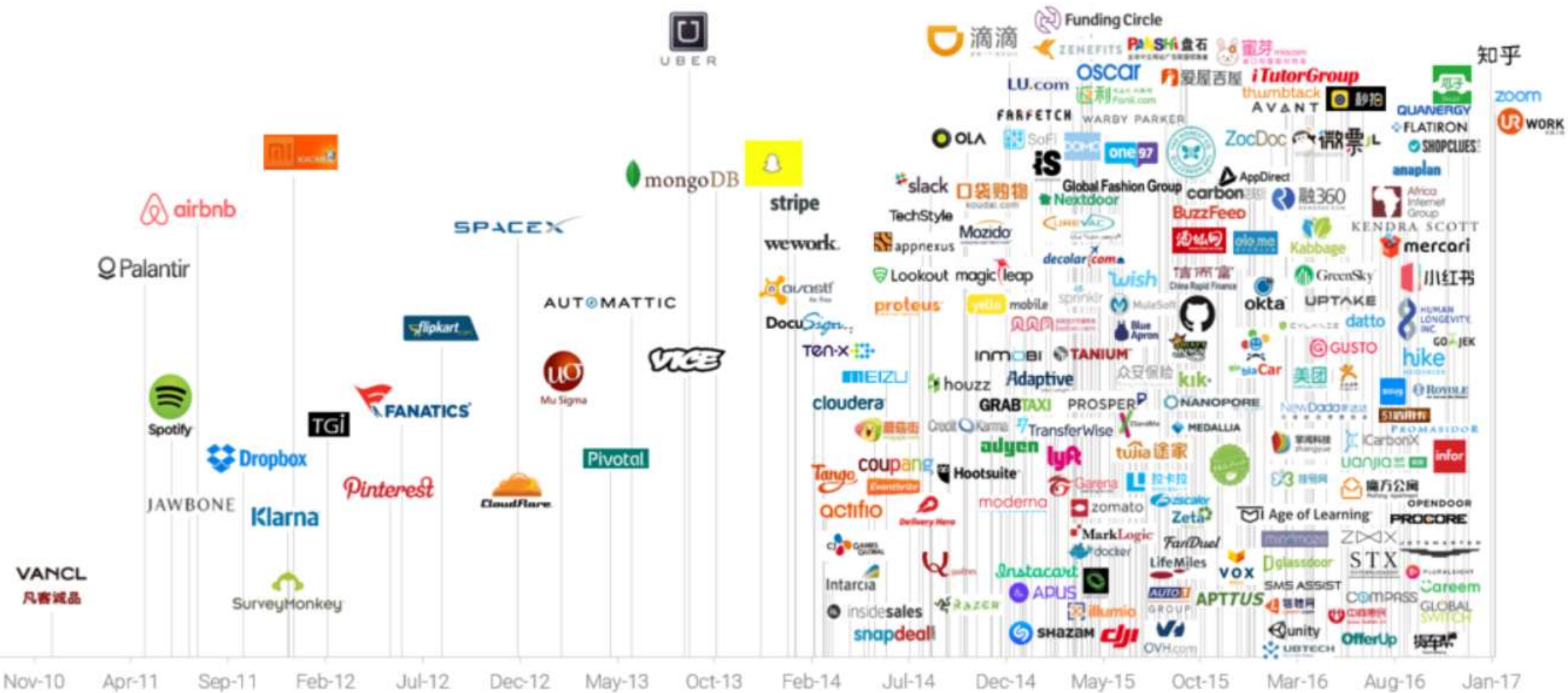
- What they are doing in terms of material health and the circular economy
- How are they doing it
- Enablers for success and challenges

# Circular Economy & Green Chemistry

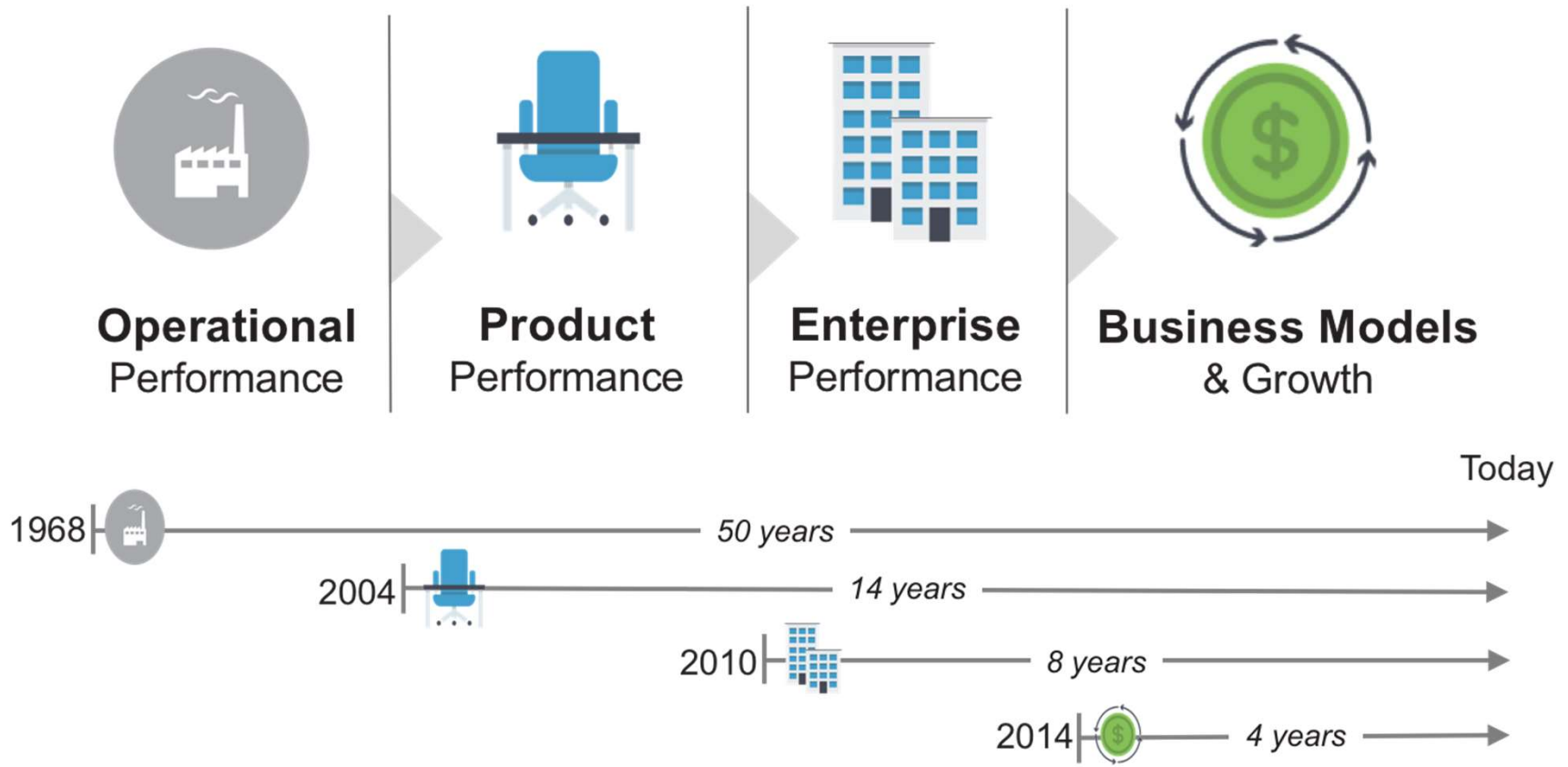
Tammy Ayers, Global Sustainability  
May 9, 2019

**Steelcase**

# WHAT MIGHT BE YOUR NEXT DISRUPTOR?

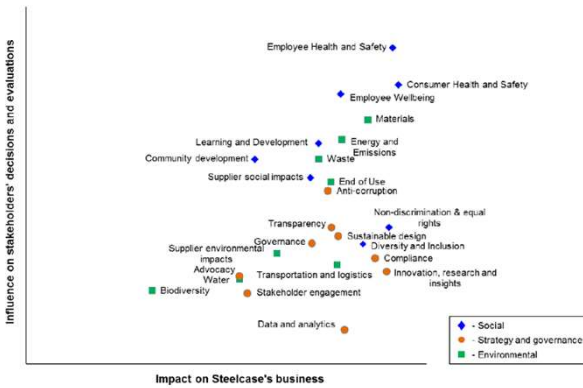


# THE SUSTAINABILITY JOURNEY

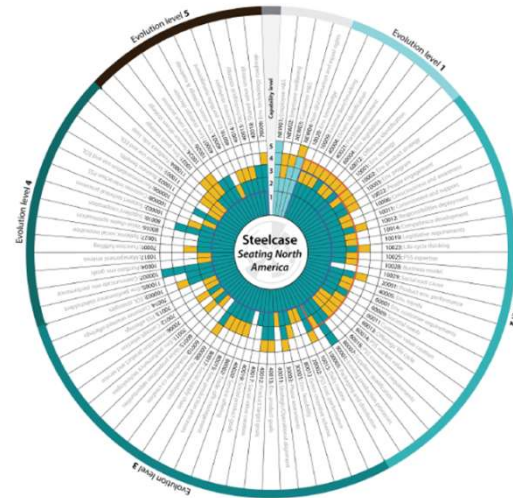


# NEW BUSINESS MODELS - CONNECTING THE “ANDS”

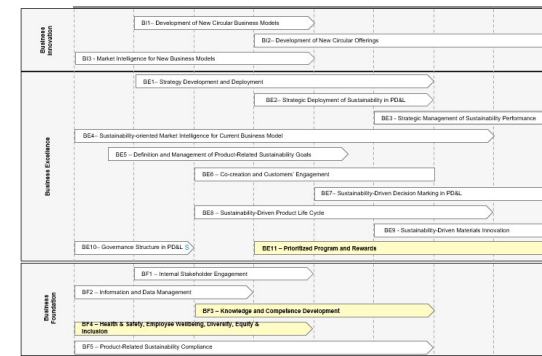
## Materiality Assessment



## Maturity Profile



## CE Roadmap & Action



*What is important to our stakeholders?*

*What is important to our company?*

*How mature is our company?*

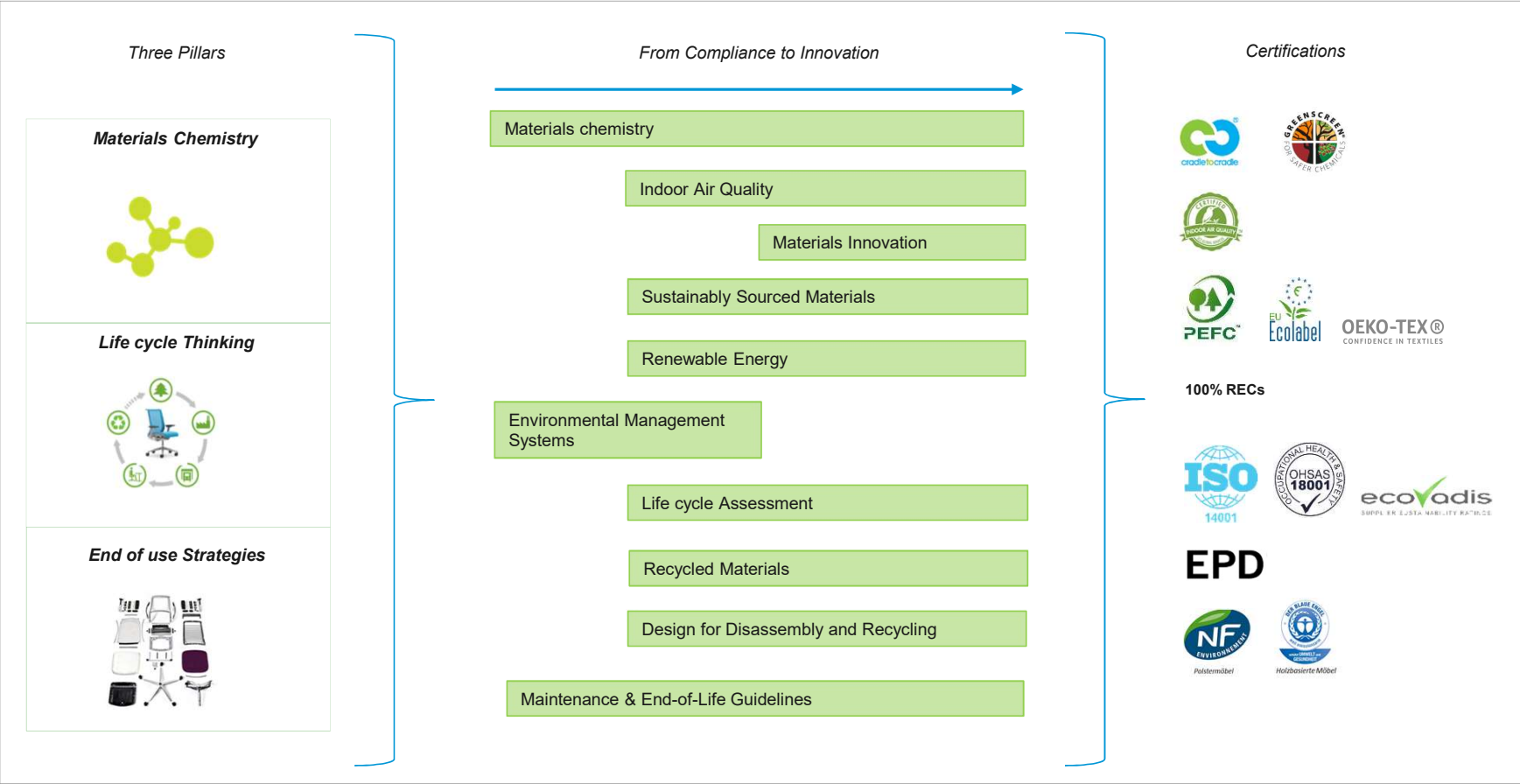
*How mature do we want to be?*

*How will we get there?*

*How do we measure progress and evolution?*



# PRODUCT PERFORMANCE IS FOUNDATIONAL



# SUSTAINABLE INNOVATION - STRATEGIES & KEY PERFORMANCE INDICATORS

Part of Tool



Portfolio Dashboard



Benchmarking Dashboard



Project Dashboard



Strategy Setting



KPI/Target Setting



Project Dashboard



KPI/Target Measurement



Project Dashboard



Portfolio Dashboard



Design for Healthy/Safe Materials Choices



Design for Innovative Material Solutions

Priority Substances of Concern

Materials Health Evaluation 1

Compete Lead Innovate



Metrics Tracking

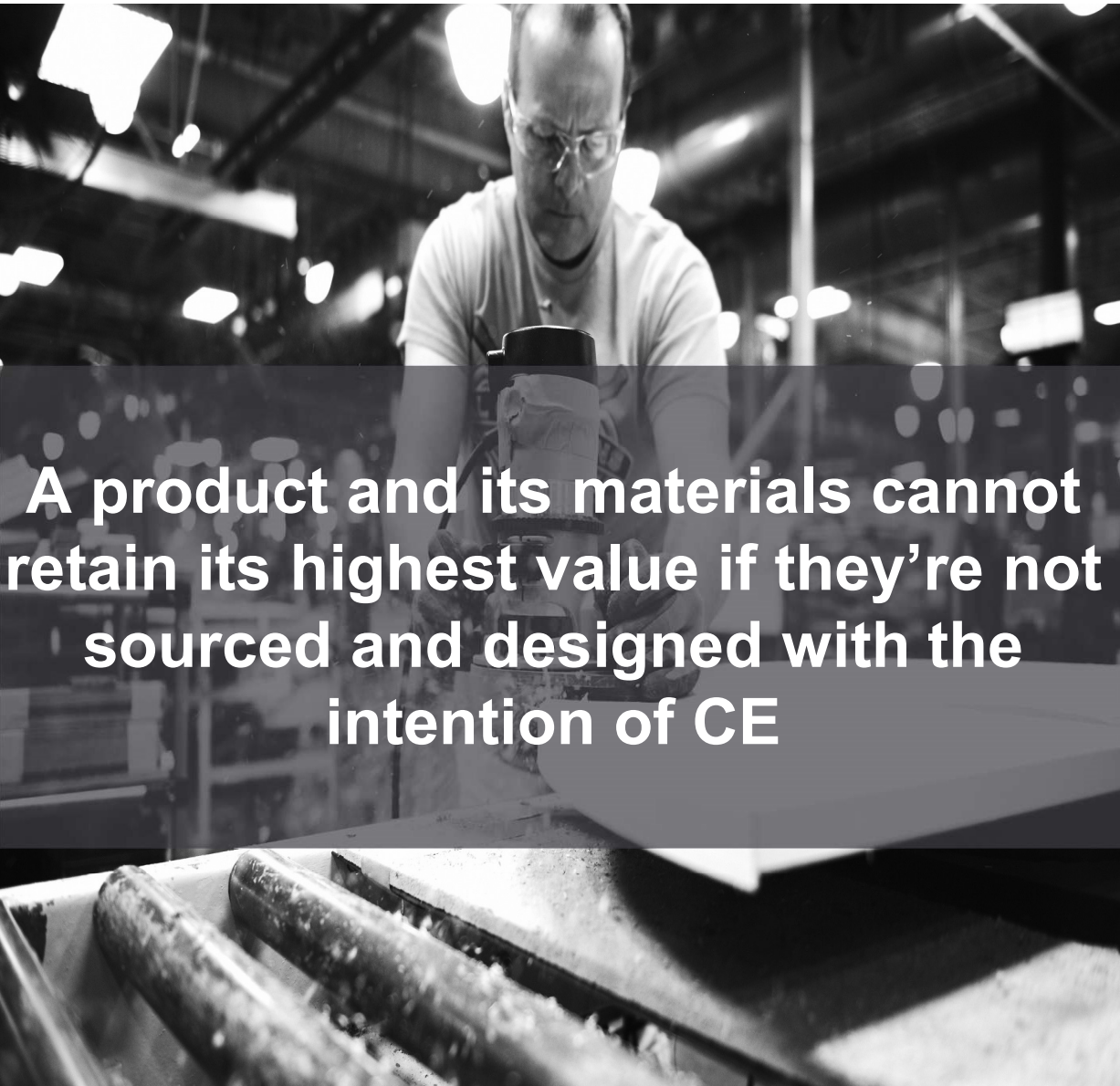
What Tool Does

- ✦ Portfolio Positioning
- ✦ Benchmarking
- ✦ Initiate Project

- ✦ Snapshot of performance
- ✦ Strategy setting
- ✦ Target setting

- ✦ Snapshot of performance
- ✦ Measurement/Tracking
- ✦ Guidance

- ✦ Final Performance
- ✦ Lessons Learned



**A product and its materials cannot retain its highest value if they're not sourced and designed with the intention of CE**



Divisio Frameless Screen

**Steelcase**



niage®

Pretty  
simple,  
simply  
better.

GC3 Roundtable

Cincinnati,  
USA

May 9<sup>th</sup> 2019

# DSM-Niaga

driven by passion & experienced to scale



*Innovation driven start-up*

home furnishing products expertise

patent protected

technologies proven

in market testing



niag6®



*Global life & material science company*

~ \$10 billion revenue, ~ 25.000 employees

over 100 years young

Dow Jones Sustainability Index leader

**a** Circular Adhesive Innovation Center  
Zwolle, The Netherlands

**a** Niaga® Innovation Center  
Geleen, The Netherlands

**a** Engineered Adhesive Production  
Meppen, Germany

**a** Regional Sales Office  
Wilmington, Delaware, U.S.

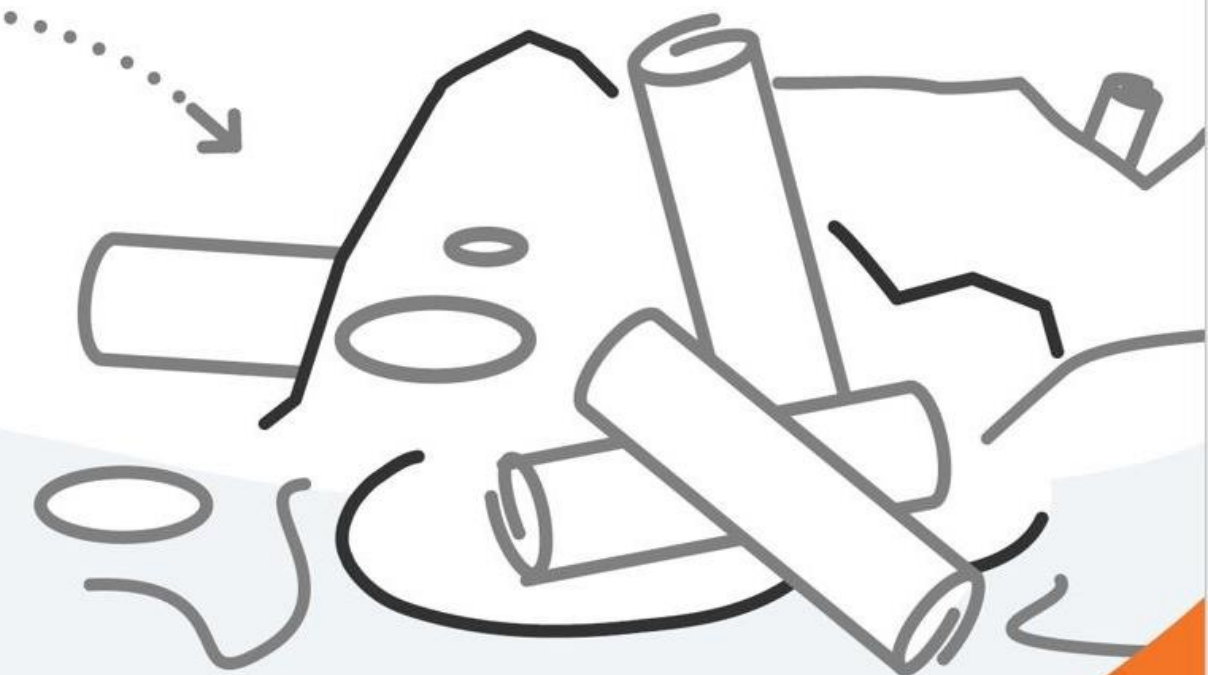
# The problem with home furniture

Home furniture: #1 least recycled item

Among largest landfill contributor

~48 bn square ft of carpet to landfill

10,000 mattresses to landfill day in



REUTERS Business Markets World Politics TV More

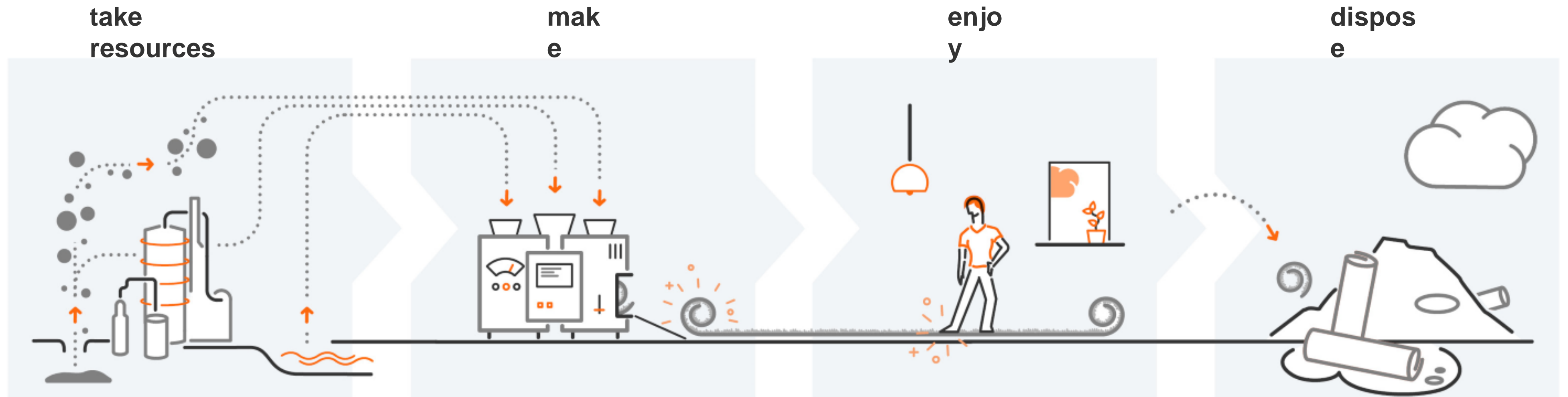
BUSINESS OF GREEN ENERGY MAY 6, 2011 / 8:50 PM / 8 YEARS AGO

## EPA Reports 9.8 Million Tons Per Year in Furniture Waste

Joanna 3 MIN READ  

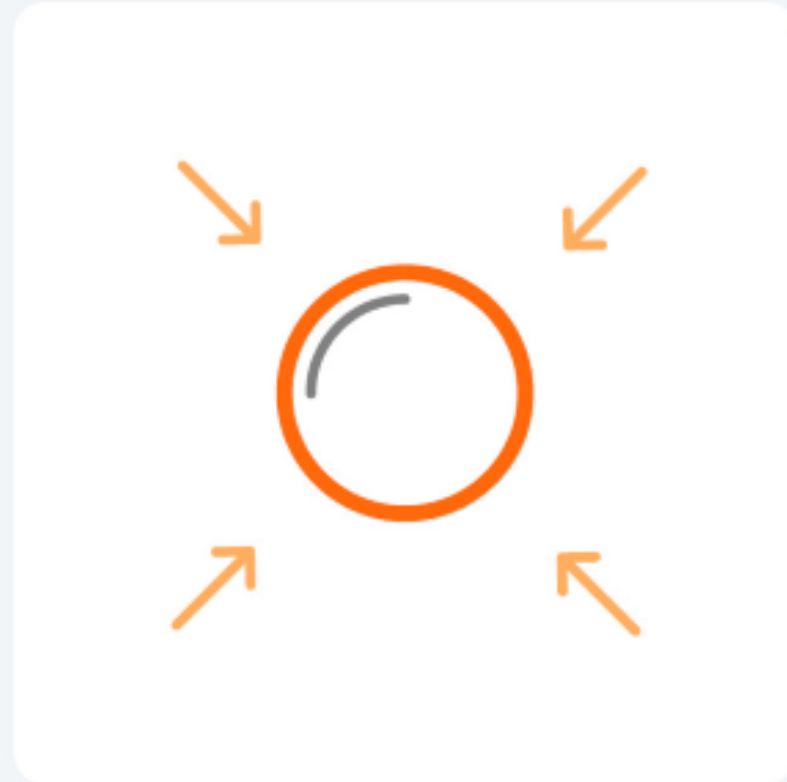
In 2009, U.S. EPA reported that furniture accounted for 9.8 million tons (4.1 percent) of household waste. Furniture is the number one least-recycled item in a household, and it was only up until 2008 that there was a recovery (materials used for recycling) greater than 0.05 percent since the 1960s - 0.1 percent. And by 2015, it is estimated that

# Because of our linear economy





# Niaga's product design philosophy



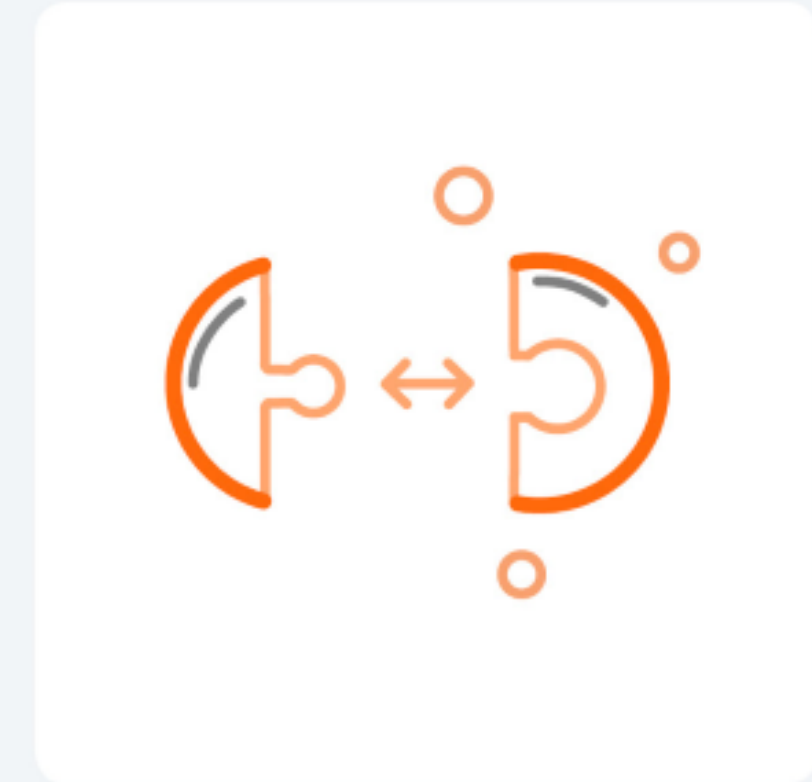
## 1. Keep it **simple**

Ask yourself if adding more ingredients is really necessary.



## 2. '**Clean**' materials only

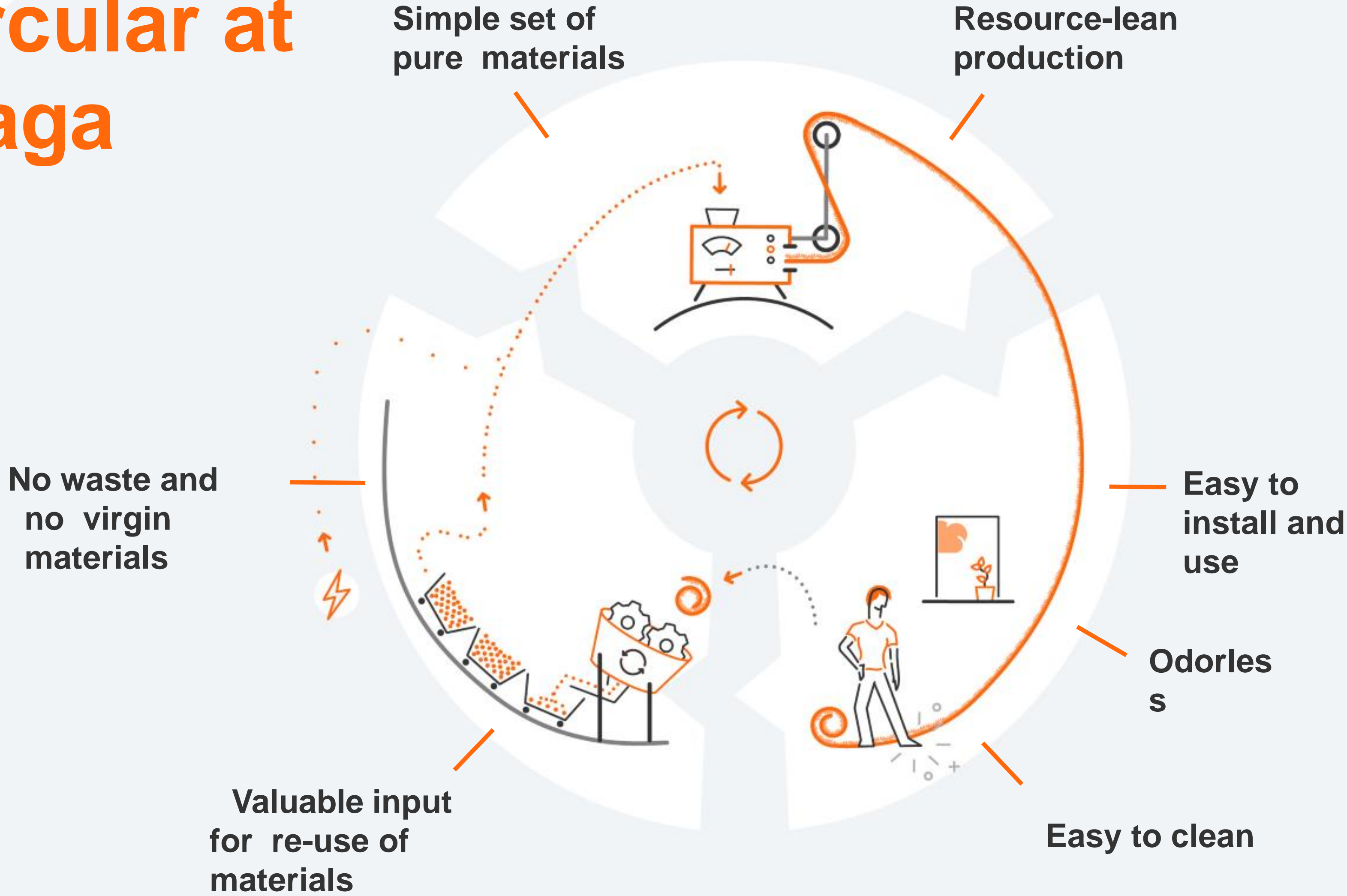
Only use materials that have been tested for their impact on our health and the environment.



## 3. Use **reversible connection**s

Connect different materials only in ways it can be decoupled after use.

# Circular at Niaga



# 5 years of Niaga

Ambition to make 100% circular products using recycled inputs

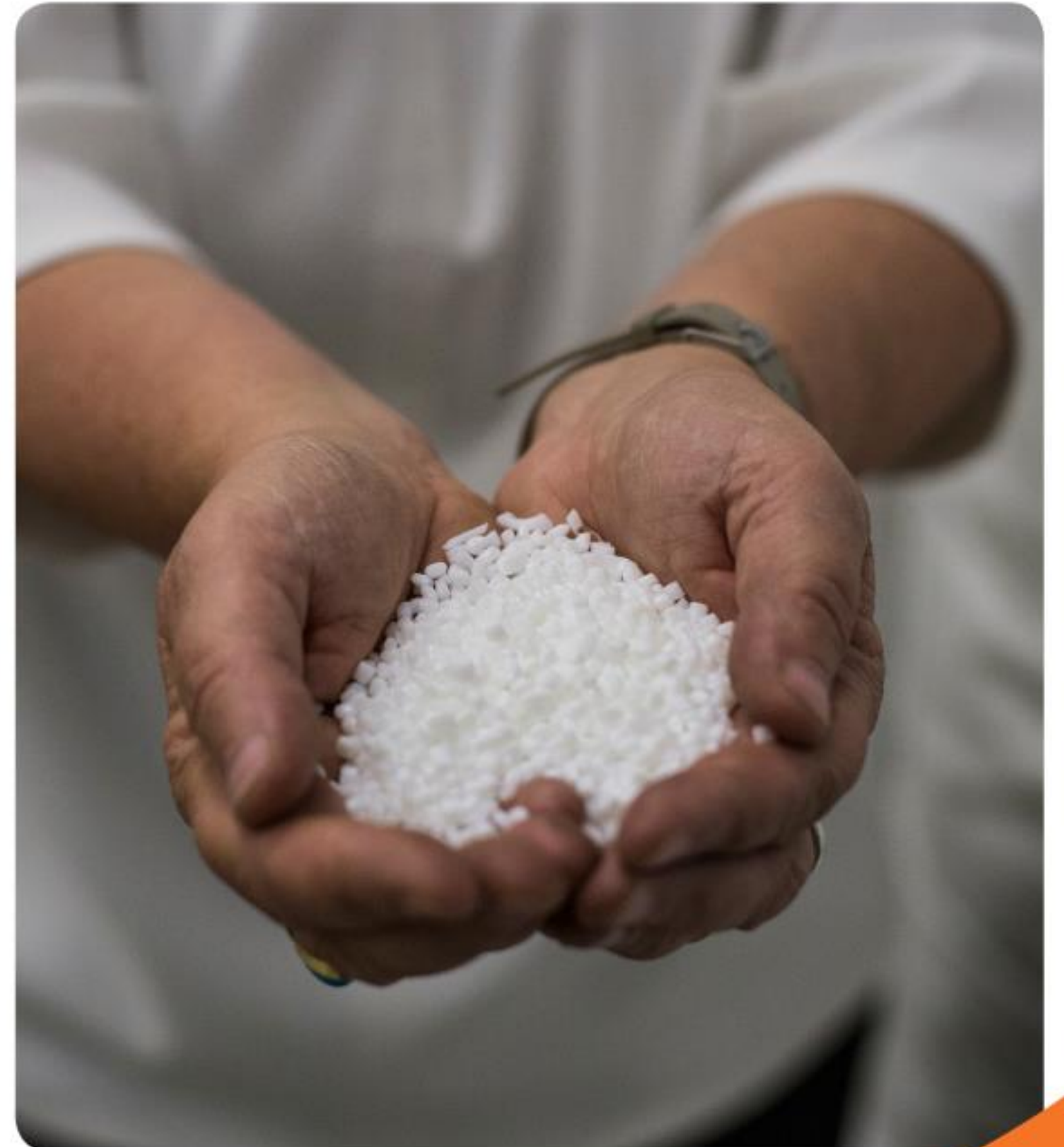
Redesigned products with simpler materials or one material to enhance quality and performance of recyclability

Our circular products in the market today:

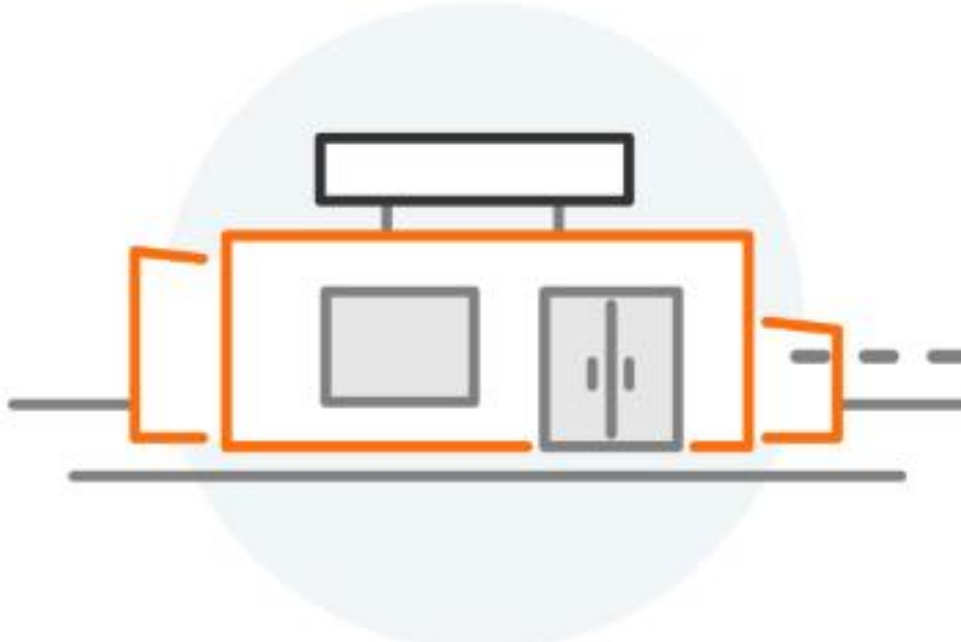
- **Carpet manufacturing technology (US, EU)**
- **Mattress that can be re-made and recycled**
- **Furniture from cellulose and food waste**

Additional benefits from circular design:

- Better indoor air quality
- Safer in case of fire with no flame retardants use
- Lighter and easier to install/use
- Less energy and water use in production for carpet



# Transparency at Niaga



**Companies** have

- **ambition**
- **Canary**: detoxing living spaces
- **Niaga®**: designing products with a business case for recycling

- Lab tests (materials, performance)
- Blockchain
- Product passport
- Track and Trace
- Crowd Auditing
- SDS, MDS etc.



**Products**

- have a **promise**
- Washable
  - Soft
  - Recyclable
  - Safe



**External forces**

- External experts
- Consumers
- NGOs
- Policy makers

# Materials info and tests

- **Documents from suppliers:**
  - MDS/SDSs
  - Certifications from recyclers (e.g. EUCertPlast)
  - Certifications from suppliers (e.g. OekoText, Ecolabels)
- **Incoming good screening + batch tests**
  - Inorganics
  - Organics of concern
  - Other potential Non Intended Added Substances (NIAS)/Contaminants
- **Product tests (external/internal)**
  - VOCs/sVOCs
  - Flammability panel
  - Organics of concern
  - NIAS/Contaminants

## Pros and Cons:

✓ Full picture (or almost) of materials!

✓ Support partners with knowledge

✗ Difficult to know everything

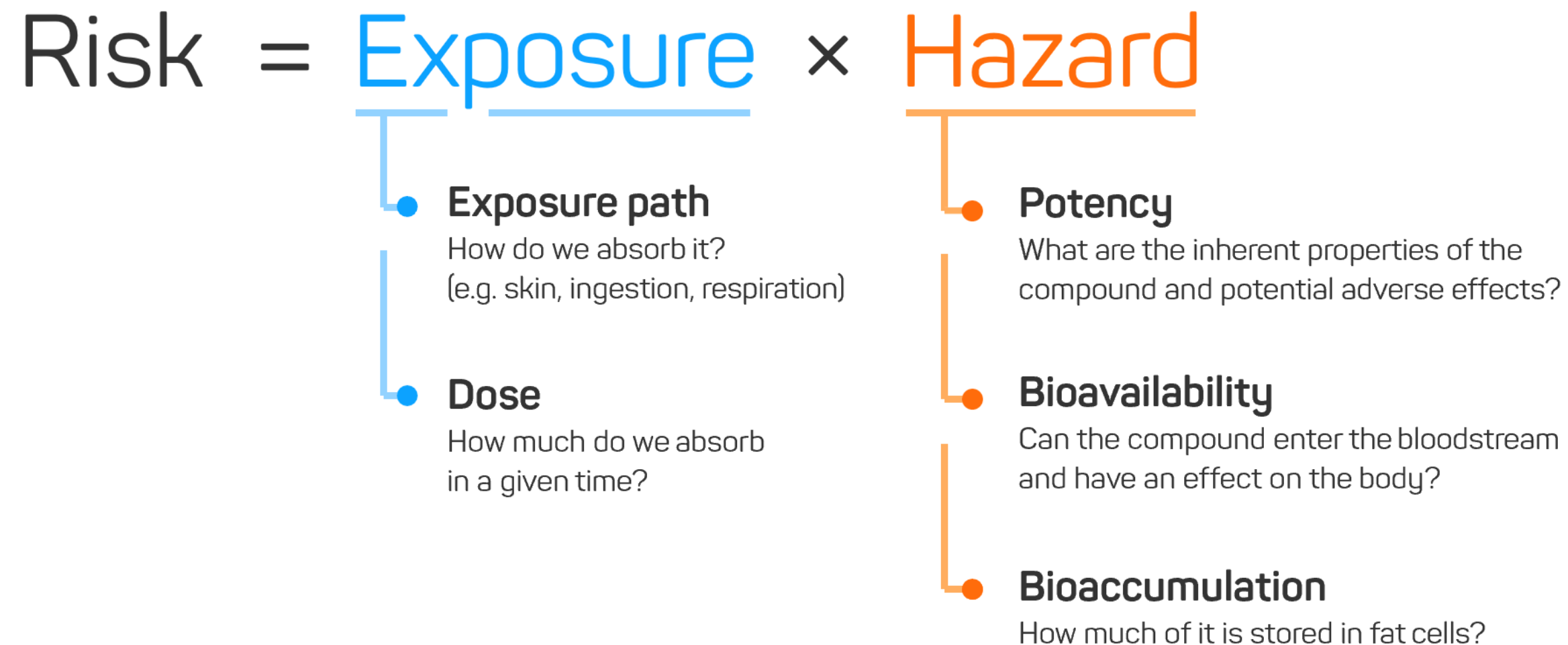
✗ It can become costly...

# Our Assessment

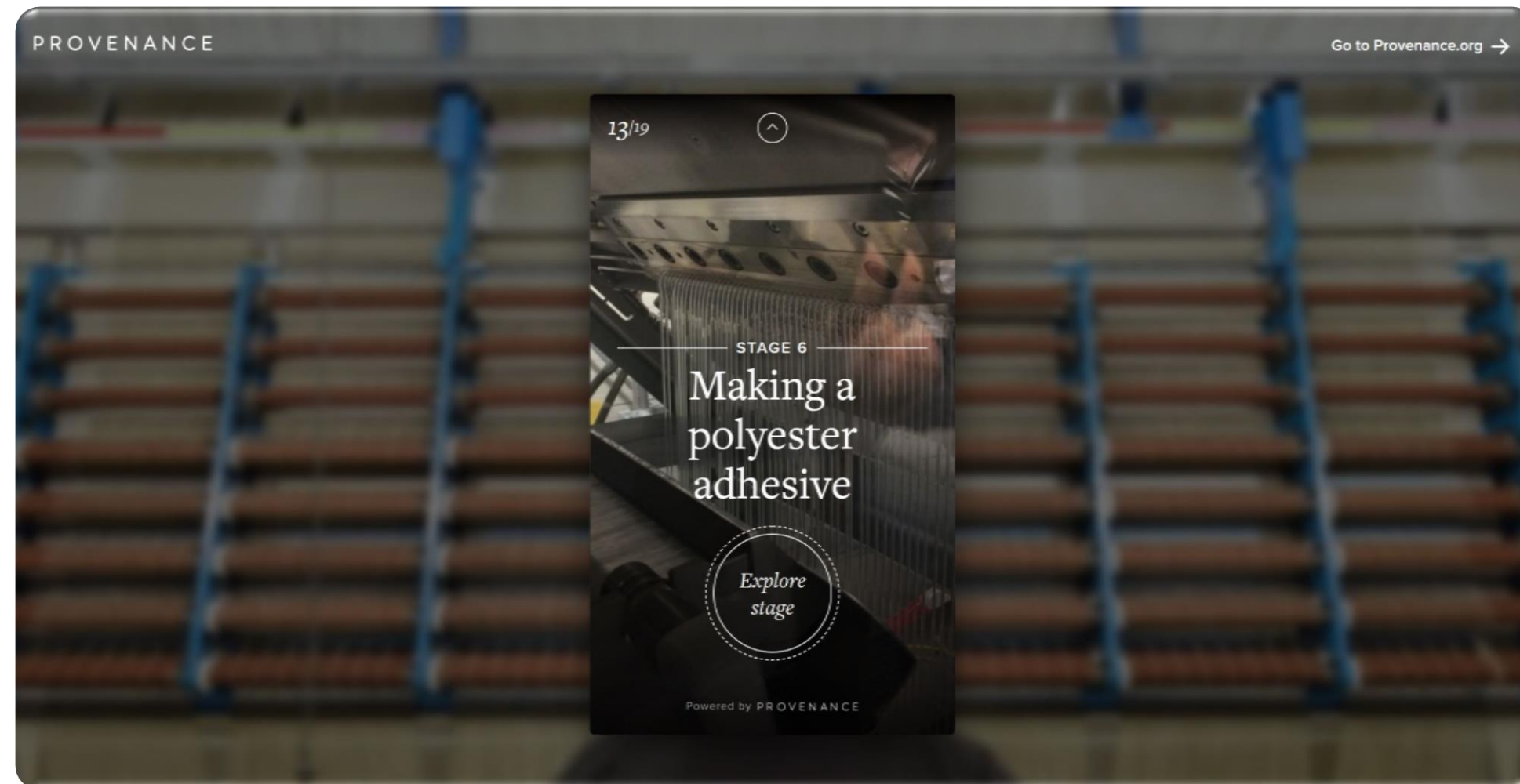
- Hazard-based approach for materials of concern:

Flame retardants    Latex    Formaldehyde    Phthalates  
BPA    PFCs    BPS    PVC    etc.

- Assessment by toxicologist for products:



# Blockchain and Product Passport technologies





# Some of our Products and Experiments

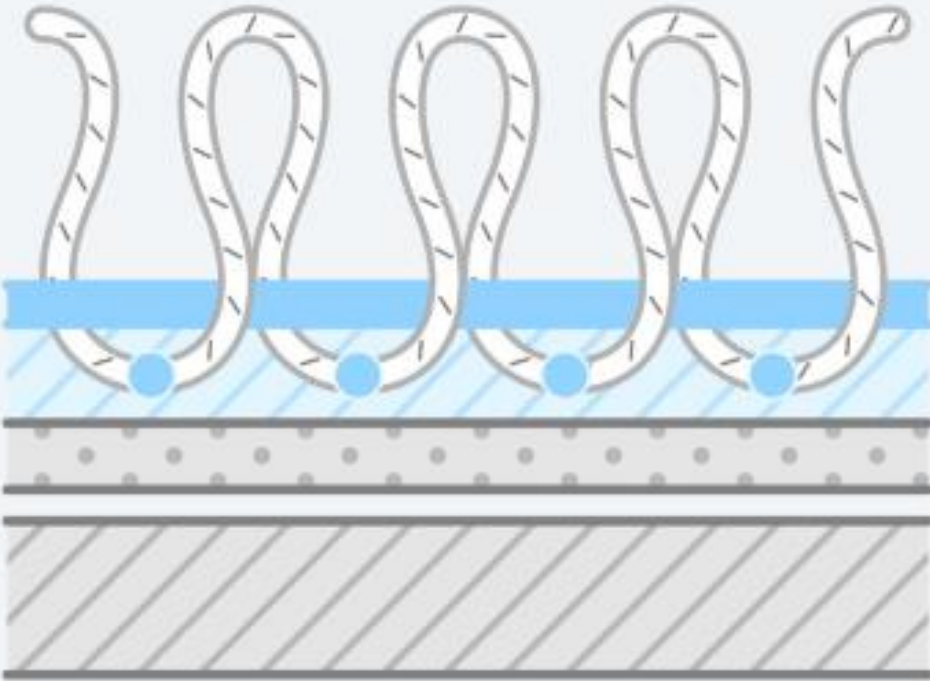




# Carpet and Rugs

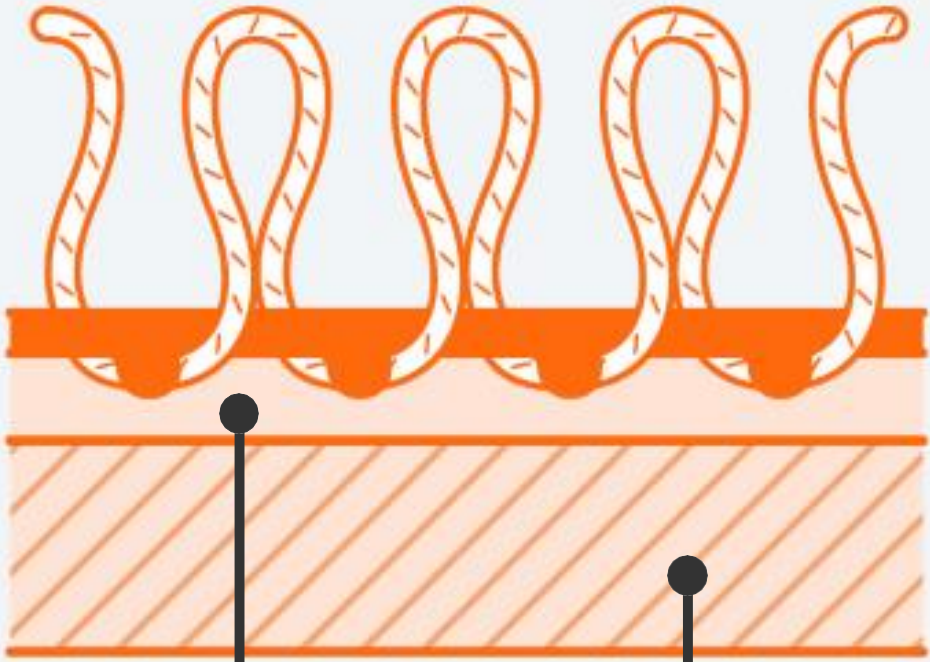
## Current Standard

Latex, CaCO<sub>3</sub>, fillers, PP, bitumen, PVC, PA6, PET, wool and others.



## Niaga® Mono

PEs only.



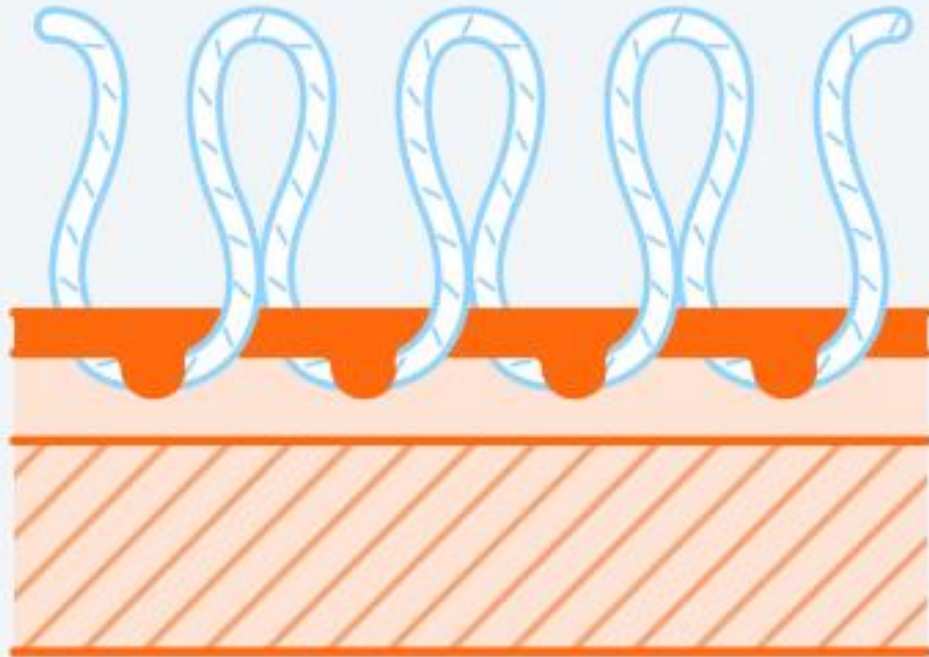
*Niaga® reversible adhesive*  
*optional integrated underpad*

## Niaga® Duo

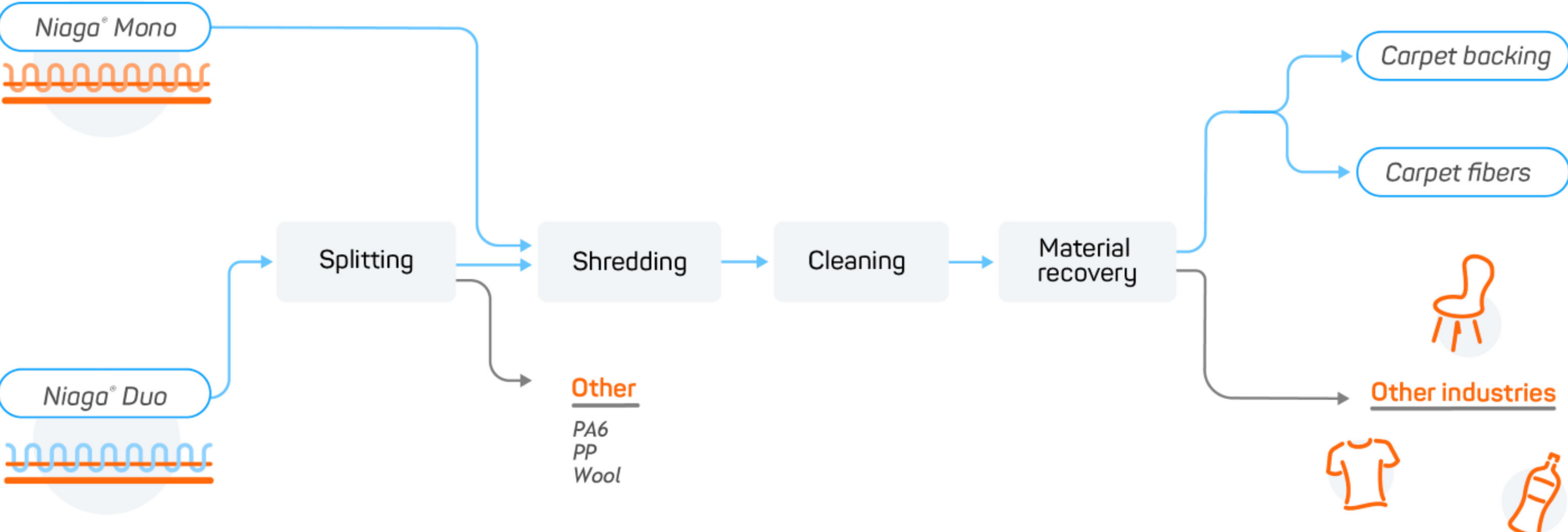
Choice of PA6, wool, PTT or PP for the face fiber.

PET and/or PA6 for the primary backing.

PET for the coating and secondary backing

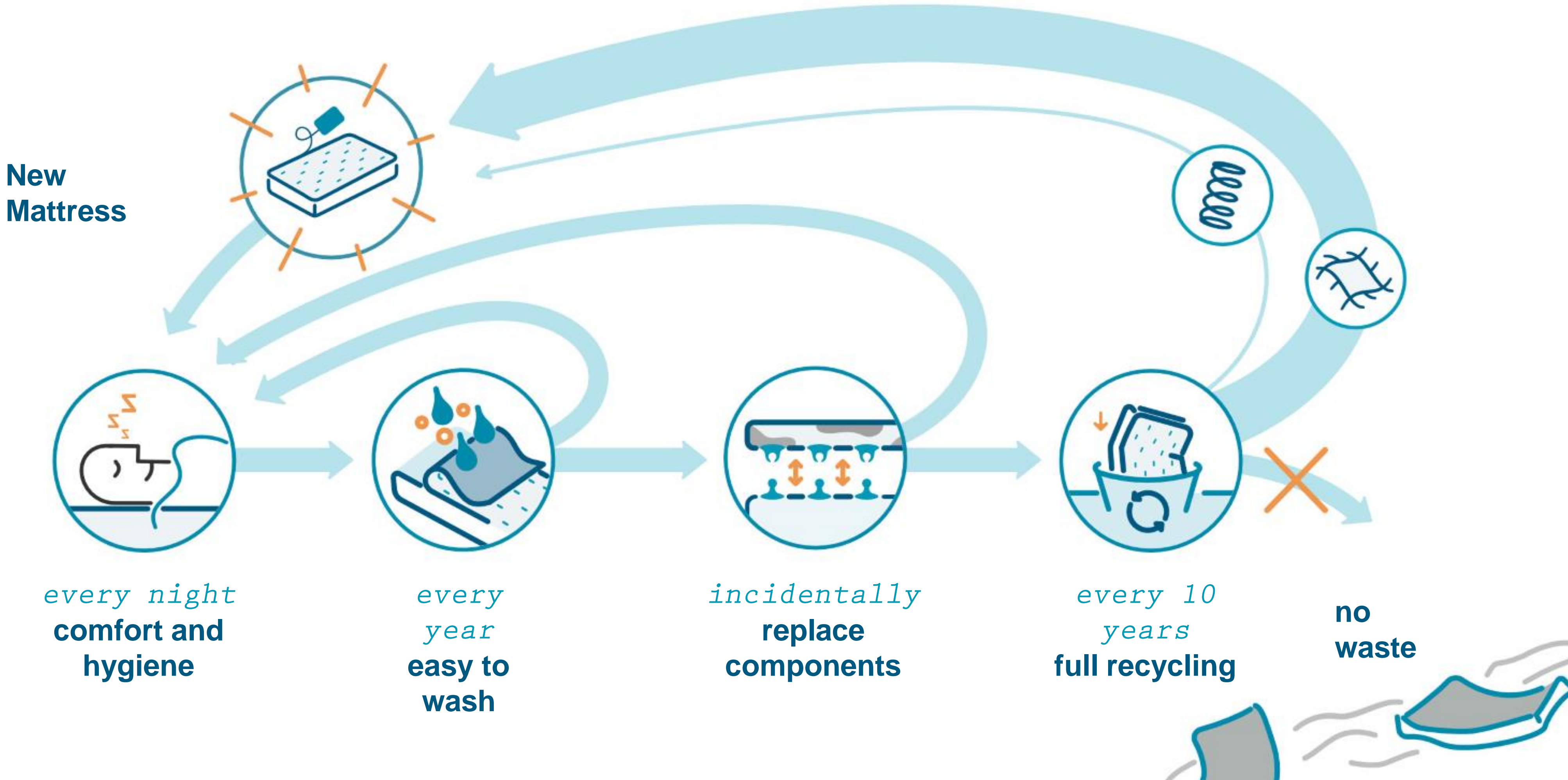


# Niaga carpet recycling



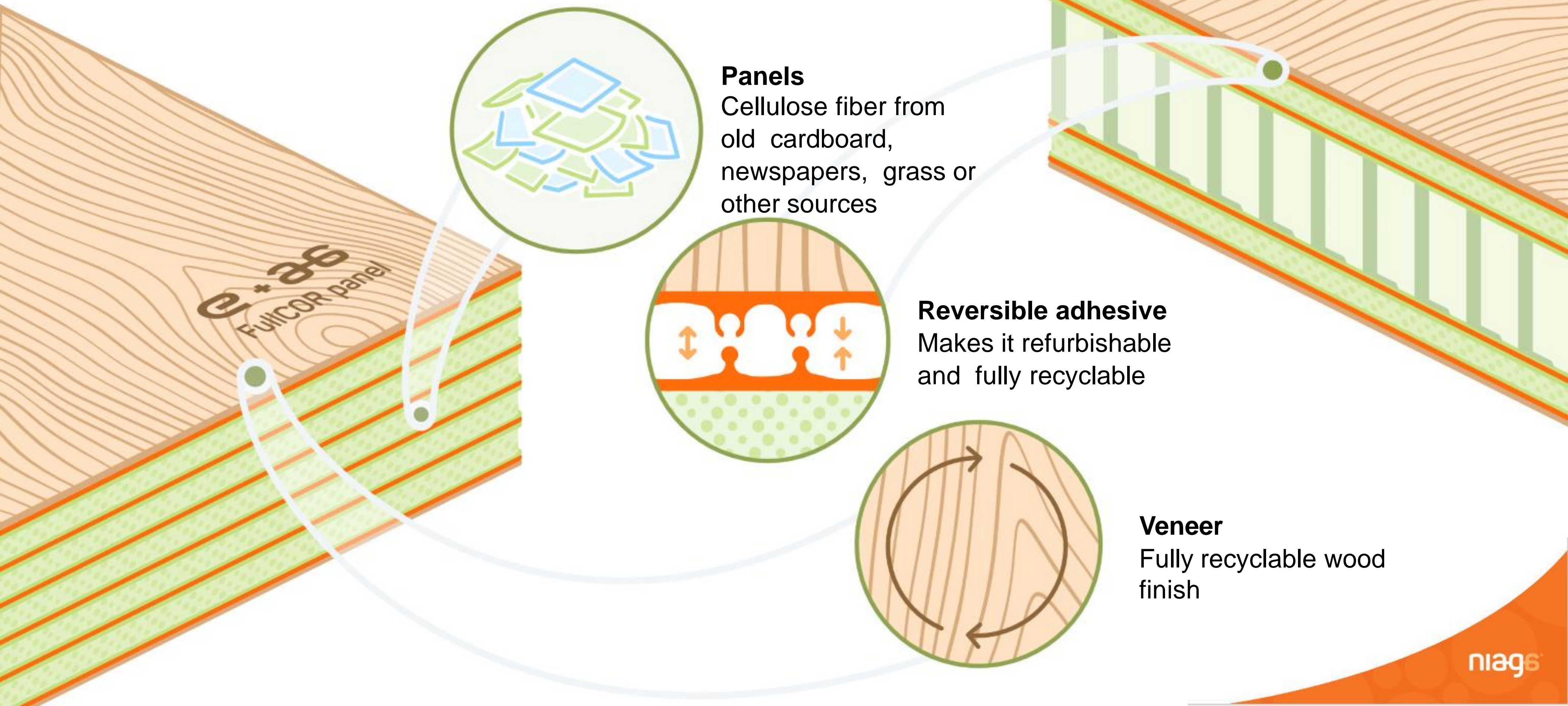


# Niaga Auping Circular Mattress





# Niaga Ecor furniture panels



## Panels

Cellulose fiber from old cardboard, newspapers, grass or other sources

## Reversible adhesive

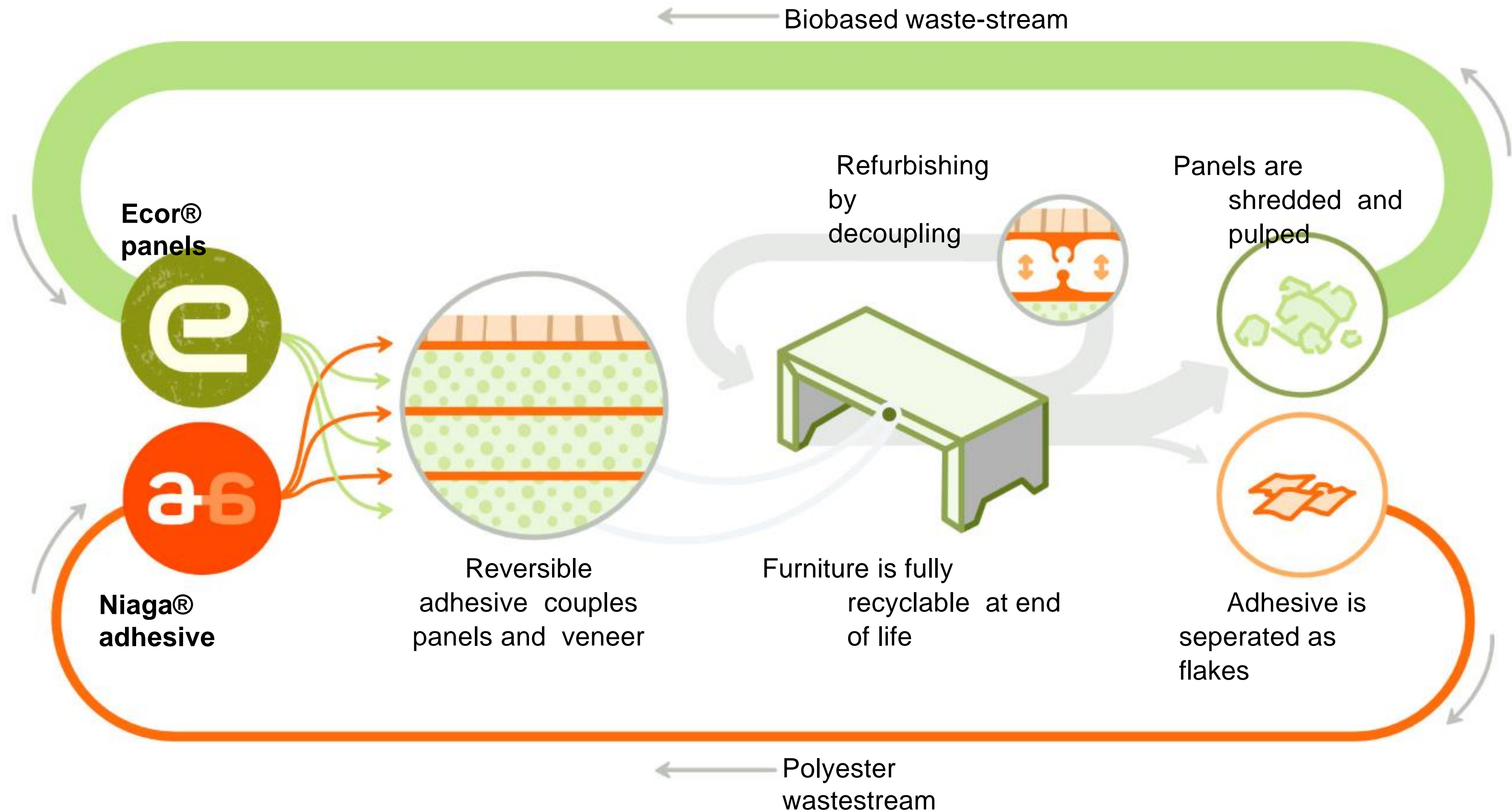
Makes it refurbishable and fully recyclable

## Veneer

Fully recyclable wood finish



# Furniture materials redesigned








# Canary startup

---

**tip no.2**  
**Dust and vacuum regularly**



the canarylife • Following

the canarylife It might not be regarded as the fanciest of jobs, but while you clean the house, you actually protect your family from dust and other microbes that cause health problems.

the canarylife Make sure to vacuum every week and don't forget to open the window while you do so!

#healthytips #healthyliving  
 #tipsparenting #tipsandtricks  
 #TheCanaryLife #heroic #superhero

2w

85 views  
 APRIL 23

Add a comment... Post



**Do It Yourself**  
 Laundry detergent

#THECANARYLIFE

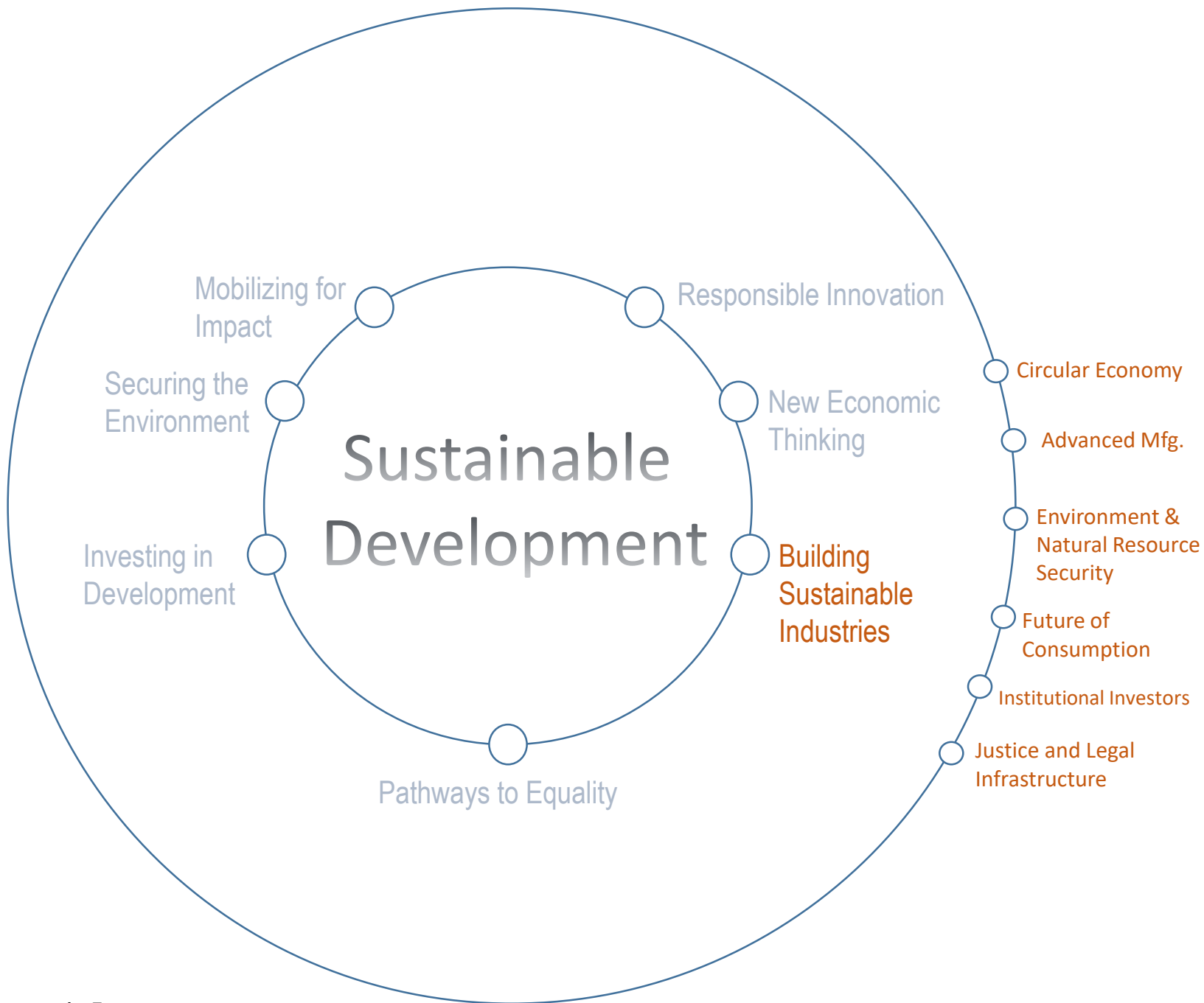


# Circular Economy+Green Chemistry

## Tarkett Perspective

Dhruv Raina

*Director of Product Stewardship & Sustainability – Tarkett USA Inc.*



# Sustainable Development

Mobilizing for Impact

Responsible Innovation

Securing the Environment

New Economic Thinking

Circular Economy

Advanced Mfg.

Investing in Development

Building Sustainable Industries

Environment & Natural Resource Security

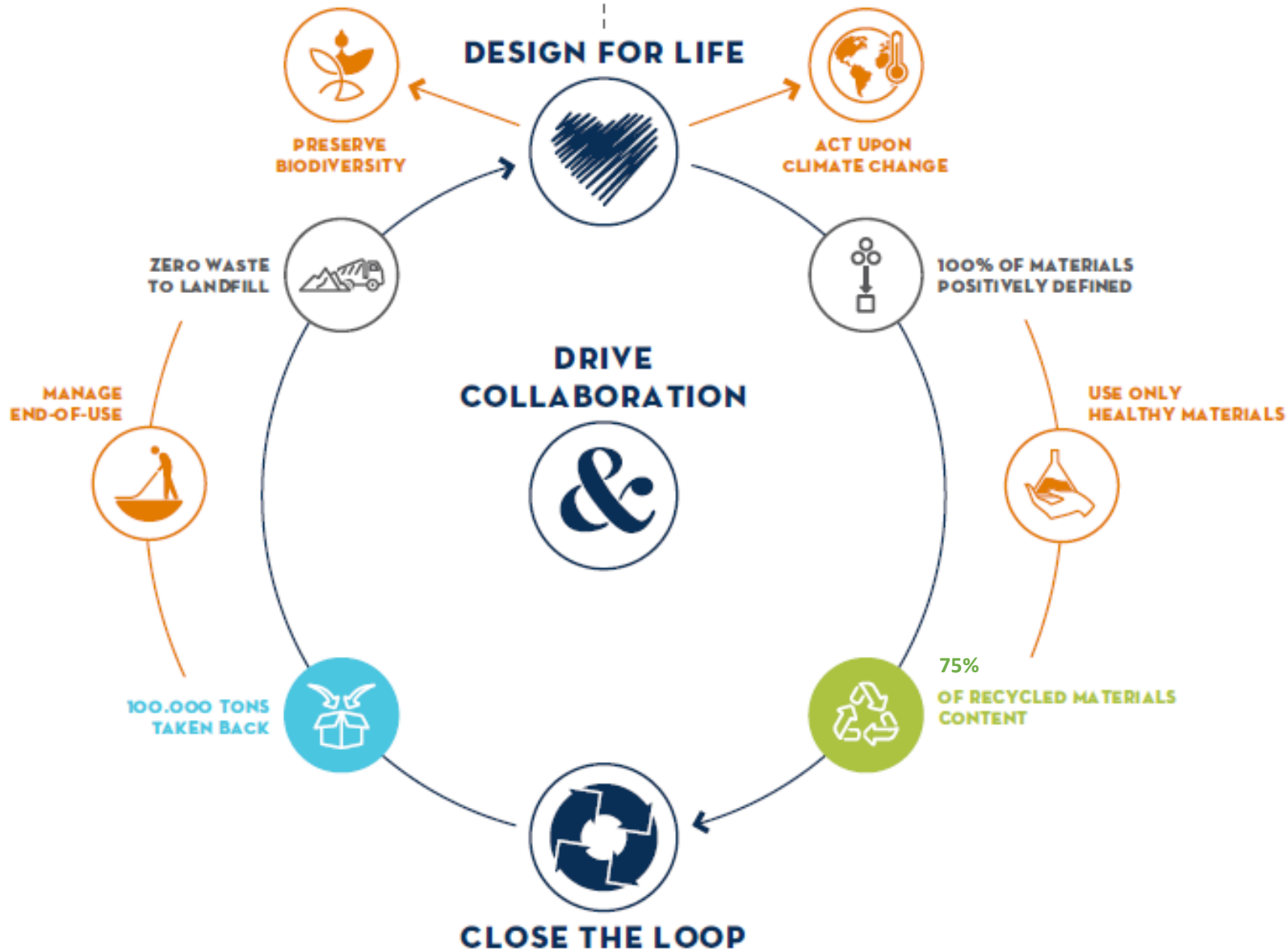
Future of Consumption

Institutional Investors

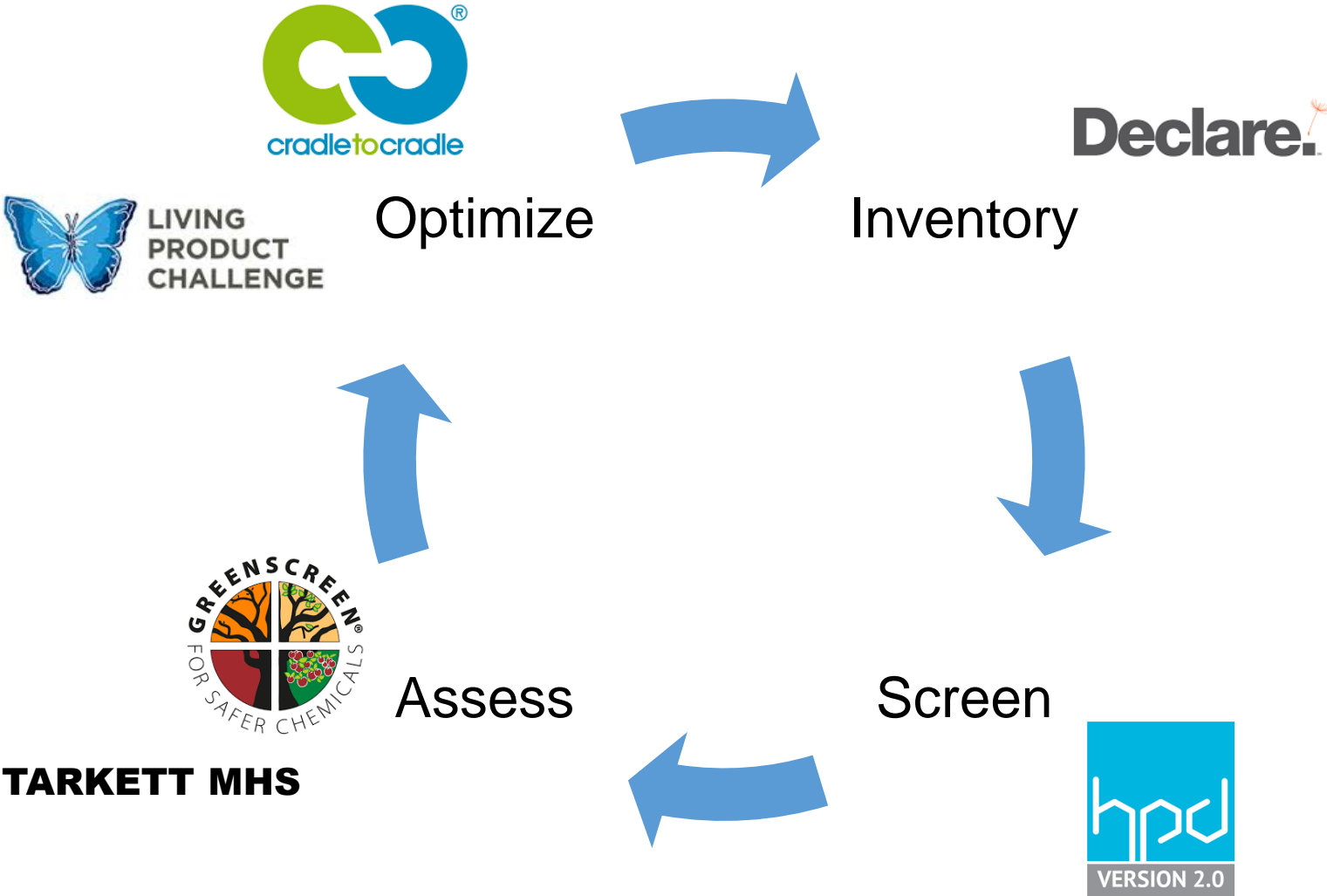
Justice and Legal Infrastructure

Pathways to Equality

DOING GOOD. TOGETHER.

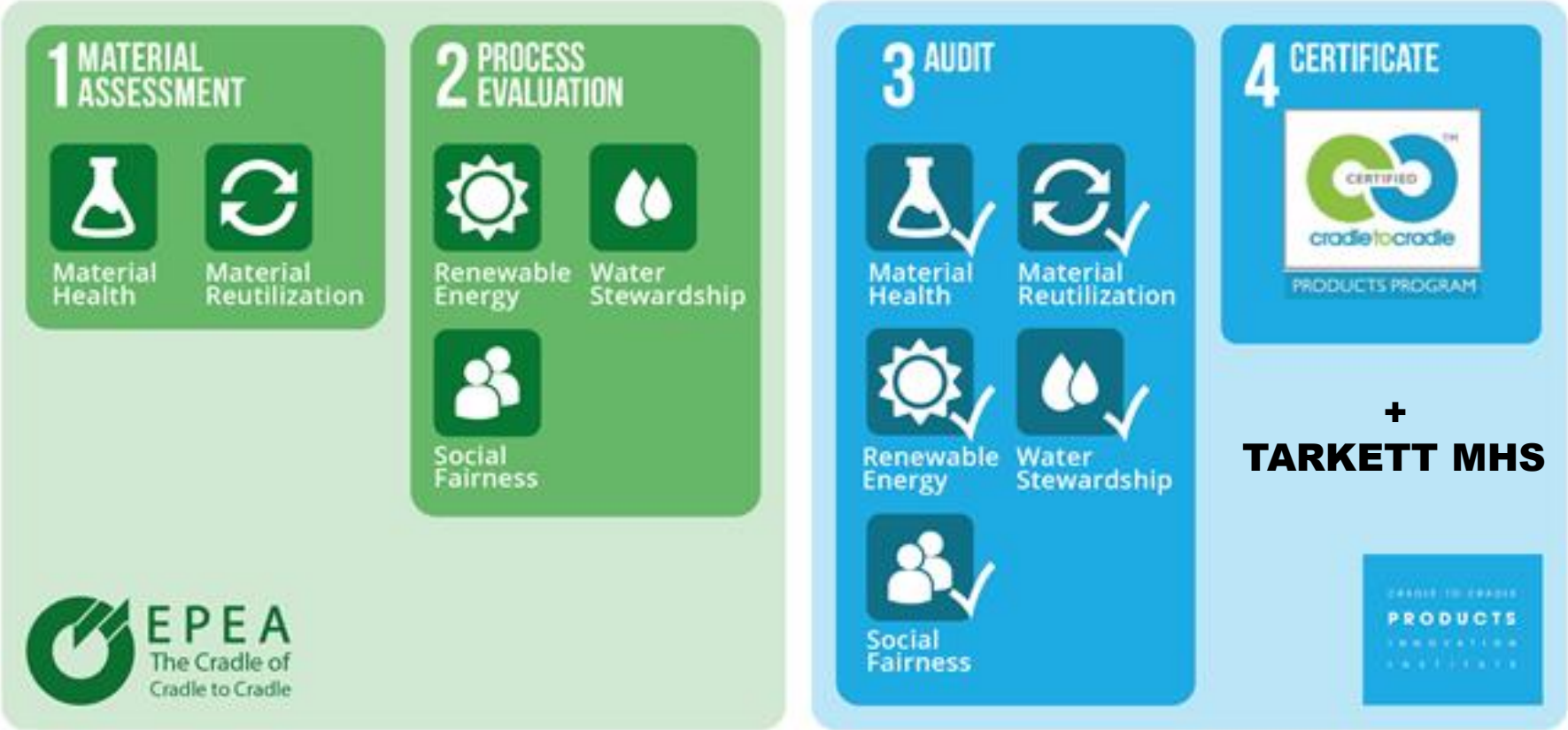


# Critical steps to Optimized Material Health



# Optimization & Cradle to Cradle

## CRADLE TO CRADLE CERTIFIED™ – PROCESS



# Optimization outcome

Material Health



**BRONZE**

NO C2C BANNED LIST CHEMICALS

Material Health



**SILVER**

NO EXPOSURE FROM CARCINOGENS, MUTAGENS, OR REPRODUCTIVE TOXICANTS

Material Health



**GOLD**

SAFE FOR HUMANS & THE ENVIRONMENT, FULLY OPTIMIZED

Material Health

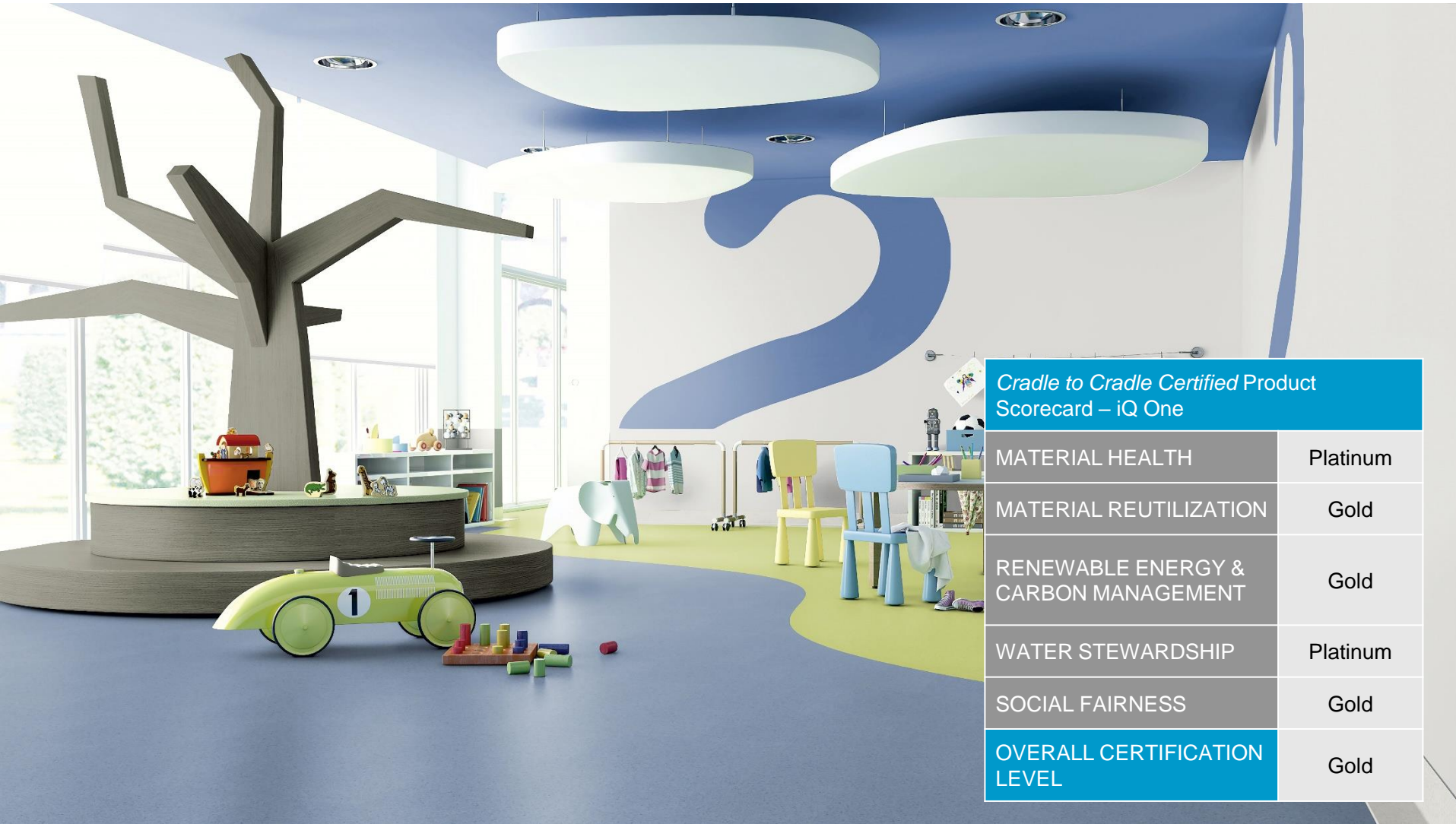


**PLATINUM**

PROCESS CHEMICALS ALSO MEET GOLD REQUIREMENTS



# What does optimization look like?



## *Cradle to Cradle Certified Product Scorecard – iQ One*

MATERIAL HEALTH	Platinum
MATERIAL REUTILIZATION	Gold
RENEWABLE ENERGY & CARBON MANAGEMENT	Gold
WATER STEWARDSHIP	Platinum
SOCIAL FAIRNESS	Gold
<b>OVERALL CERTIFICATION LEVEL</b>	<b>Gold</b>

# What does optimization look like?

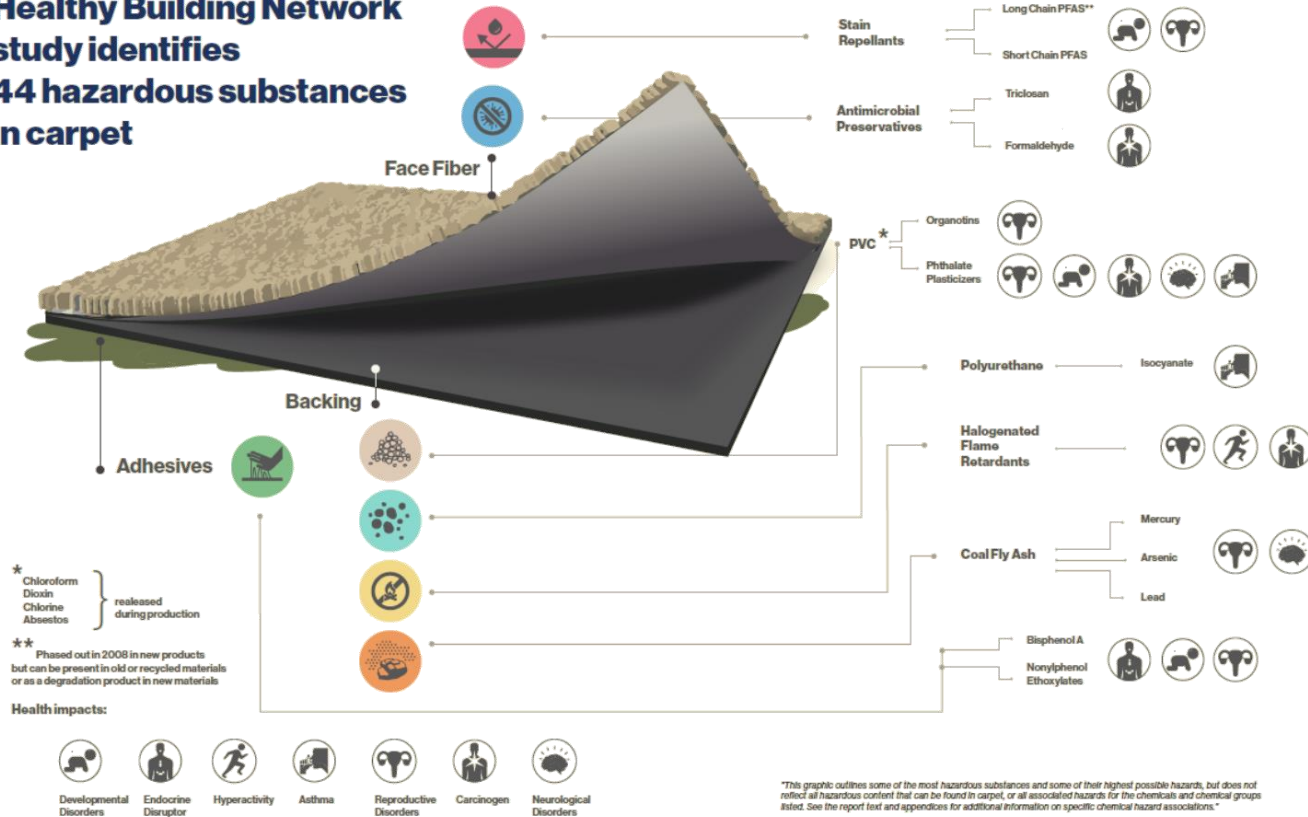


## Cradle to Cradle Certified Product Scorecard – Ethos Modular Carpet Tile

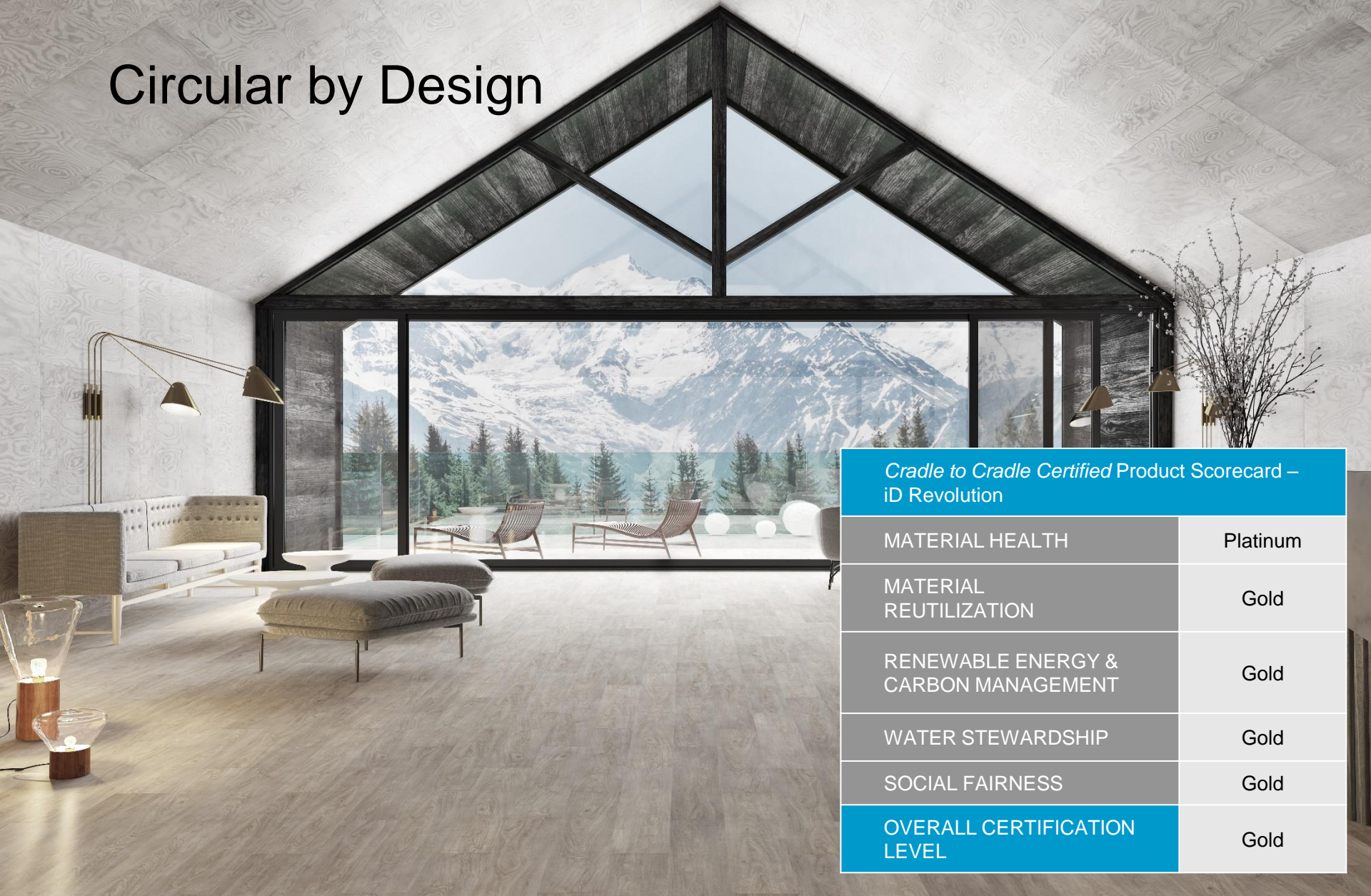
MATERIAL HEALTH	Silver
MATERIAL REUTILIZATION	Gold
RENEWABLE ENERGY & CARBON MANAGEMENT	Gold
WATER STEWARDSHIP	Silver
SOCIAL FAIRNESS	Silver
OVERALL CERTIFICATION LEVEL	Silver

# What does optimization look like?

## Healthy Building Network study identifies 44 hazardous substances in carpet



# Circular by Design



<i>Cradle to Cradle Certified Product Scorecard – iD Revolution</i>	
MATERIAL HEALTH	Platinum
MATERIAL REUTILIZATION	Gold
RENEWABLE ENERGY & CARBON MANAGEMENT	Gold
WATER STEWARDSHIP	Gold
SOCIAL FAIRNESS	Gold
<b>OVERALL CERTIFICATION LEVEL</b>	<b>Gold</b>

# TOGETHER, WE WILL HAVE A POSITIVE IMPACT

ON PEOPLE AND THE PLANET

People's  
health



Planet  
Natural  
Capital



Today and  
Future  
generations

